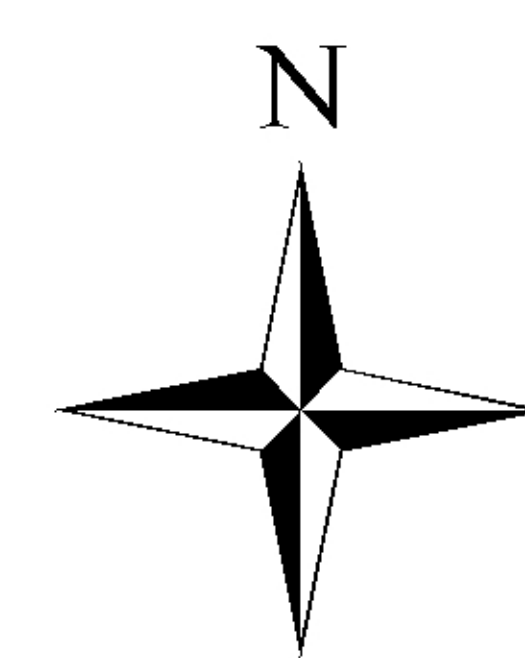


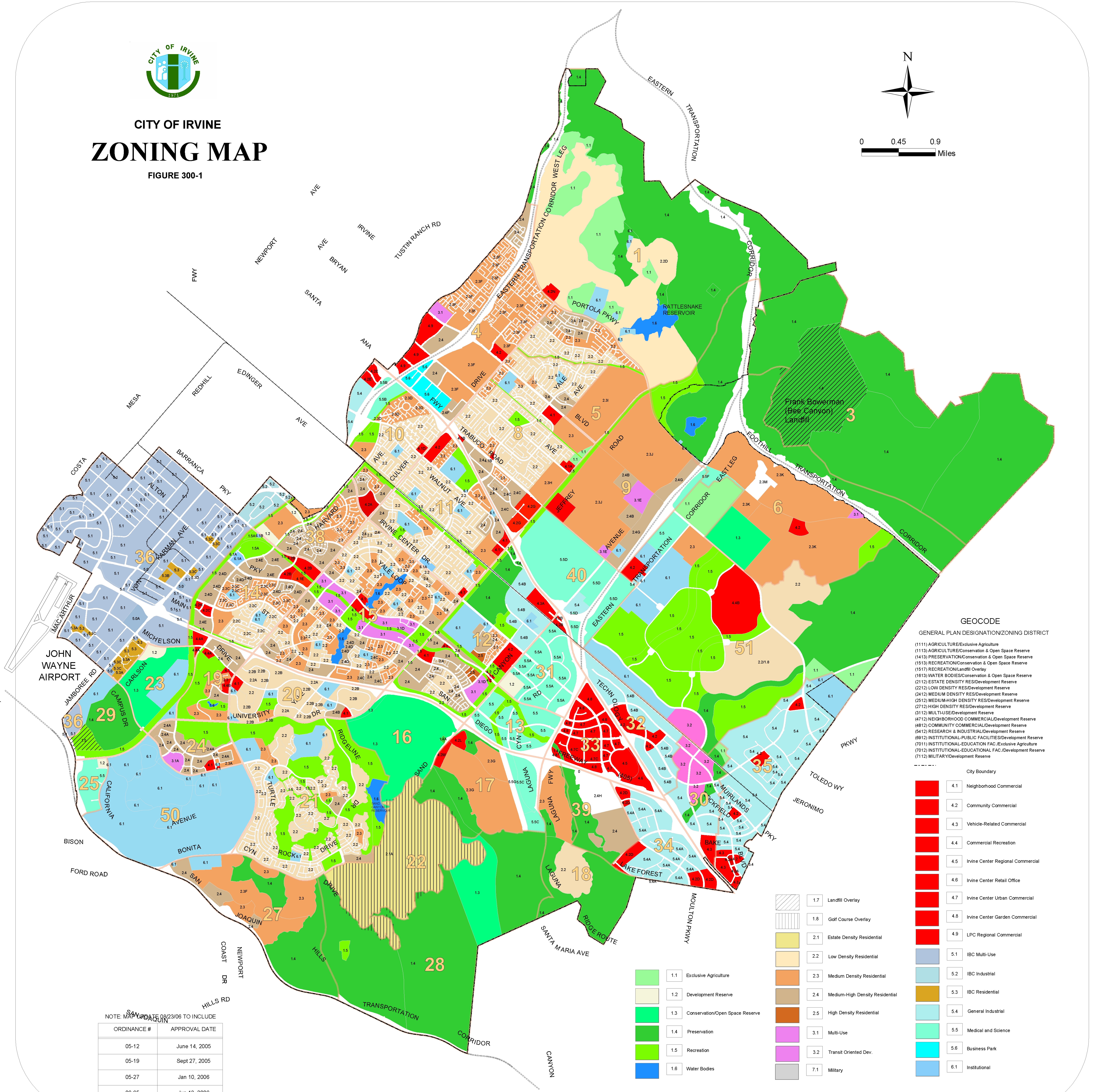


CITY OF IRVINE ZONING MAP

FIGURE 300-1



0 0.45 0.9 Miles



- GEOCODE**
- GENERAL PLAN DESIGNATION/ZONING DISTRICT
- (111) AGRICULTURE/Exclusive Agriculture
 - (113) AGRICULTURE/Conservation & Open Space Reserve
 - (143) PRESERVATION/Conservation & Open Space Reserve
 - (153) RECREATION/Conservation & Open Space Reserve
 - (157) RECREATION/Landfill Overlay
 - (163) WATER BODIES/Conservation & Open Space Reserve
 - (212) ESTATE DENSITY RES/Development Reserve
 - (220) LOW DENSITY RES/Development Reserve
 - (242) MEDIUM DENSITY RES/Development Reserve
 - (252) MEDIUM-HIGH DENSITY RES/Development Reserve
 - (272) HIGH DENSITY RES/Development Reserve
 - (312) MULTI-USE/Development Reserve
 - (4713) NEIGHBORHOOD COMMERCIAL/Development Reserve
 - (4812) COMMUNITY COMMERCIAL/Development Reserve
 - (5412) RESEARCH & INDUSTRIAL/Development Reserve
 - (6912) INSTITUTIONAL-PUBLIC FACILITIES/Development Reserve
 - (7011) INSTITUTIONAL-EDUCATION FAC/Exclusive Agriculture
 - (7012) INSTITUTIONAL-EDUCATION FAC/Development Reserve
 - (7112) MILITARY/Development Reserve

- City Boundary
- 4.1 Neighborhood Commercial
 - 4.2 Community Commercial
 - 4.3 Vehicle-Related Commercial
 - 4.4 Commercial Recreation
 - 4.5 Irvine Center Regional Commercial
 - 4.6 Irvine Center Retail Office
 - 4.7 Irvine Center Urban Commercial
 - 4.8 Irvine Center Garden Commercial
 - 4.9 LPC Regional Commercial
 - 5.1 IBC Multi-Use
 - 5.2 IBC Industrial
 - 5.3 IBC Residential
 - 5.4 General Industrial
 - 5.5 Medical and Science
 - 5.6 Business Park
 - 6.1 Institutional

- 1.1 Exclusive Agriculture
- 1.2 Development Reserve
- 1.3 Conservation/Open Space Reserve
- 1.4 Preservation
- 1.5 Recreation
- 1.6 Water Bodies
- 1.7 Landfill Overlay
- 1.8 Golf Course Overlay
- 2.1 Estate Density Residential
- 2.2 Low Density Residential
- 2.3 Medium Density Residential
- 2.4 Medium-High Density Residential
- 2.5 High Density Residential
- 3.1 Multi-Use
- 3.2 Transit Oriented Dev.
- 7.1 Military

NOTE: MAP UPDATE 08/23/06 TO INCLUDE SAN JUAN

ORDINANCE #	APPROVAL DATE
05-12	June 14, 2005
05-19	Sept 27, 2005
05-27	Jan 10, 2006
06-65	Jun 13, 2006